

# WESLEY ORGANS

*SCHMATIC DIAGRAMS*

*W E S L E Y 5 2*

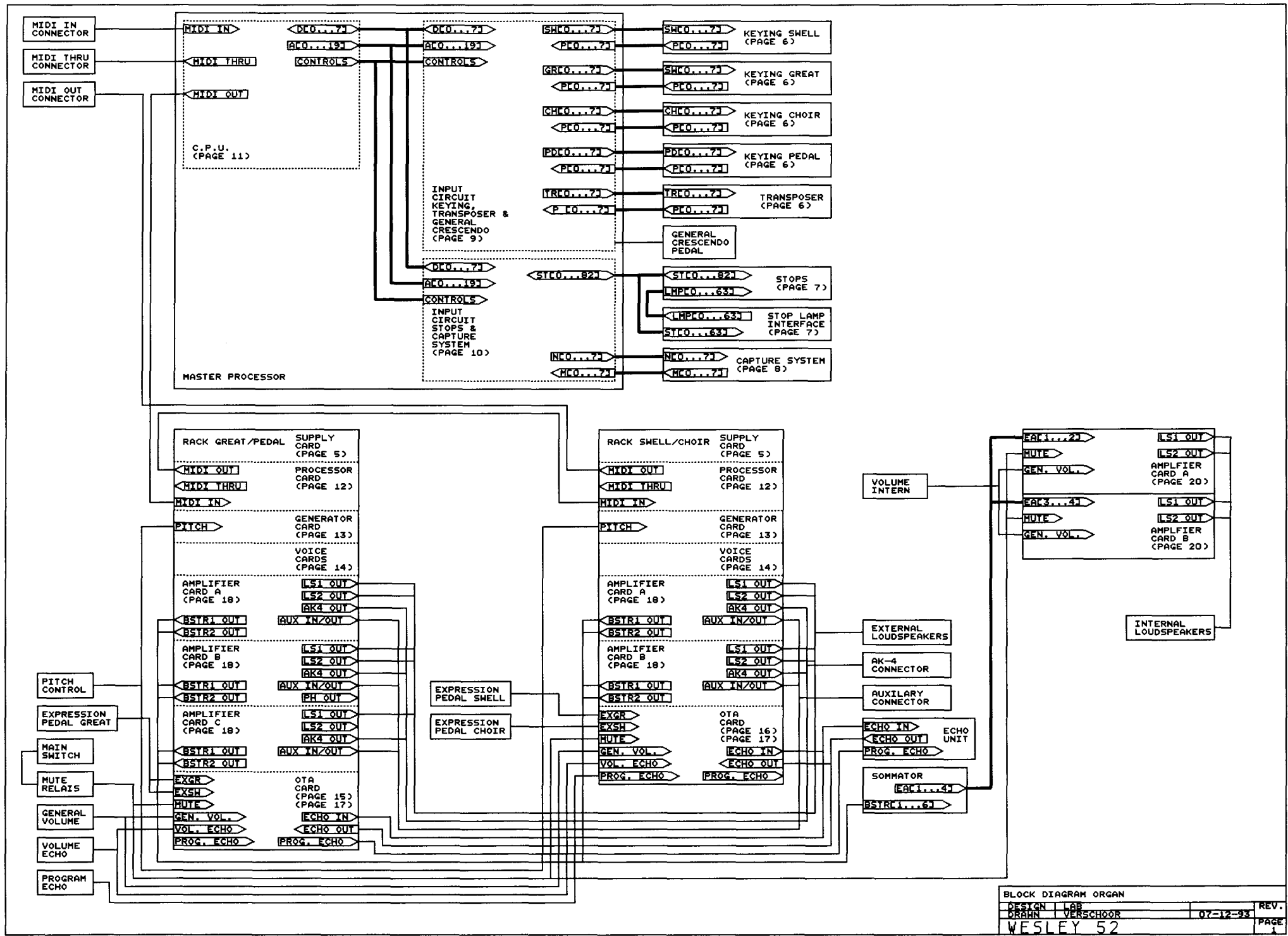
ALTERATIONS RESERVED

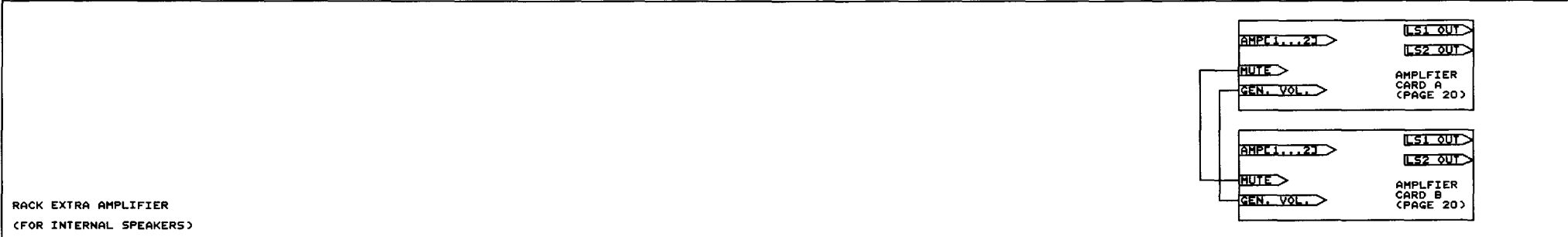
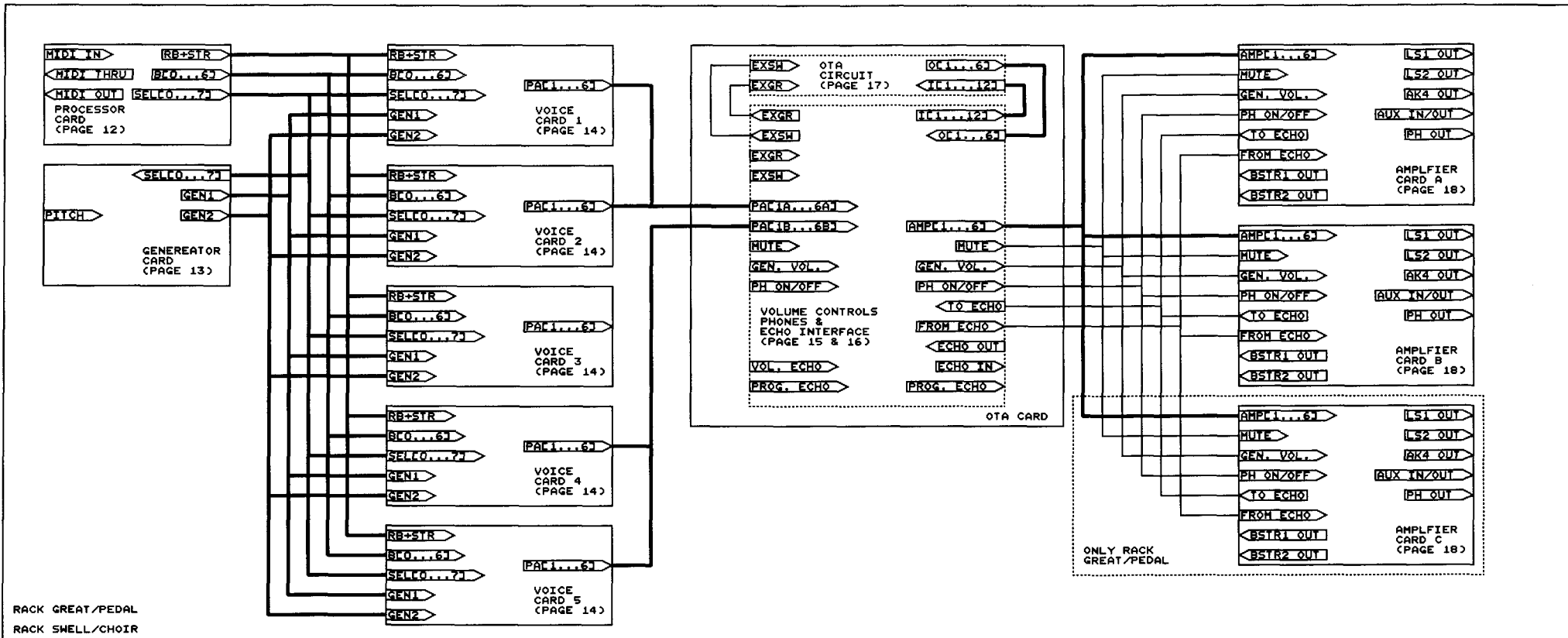
SAMICK ORGAN COMPANY

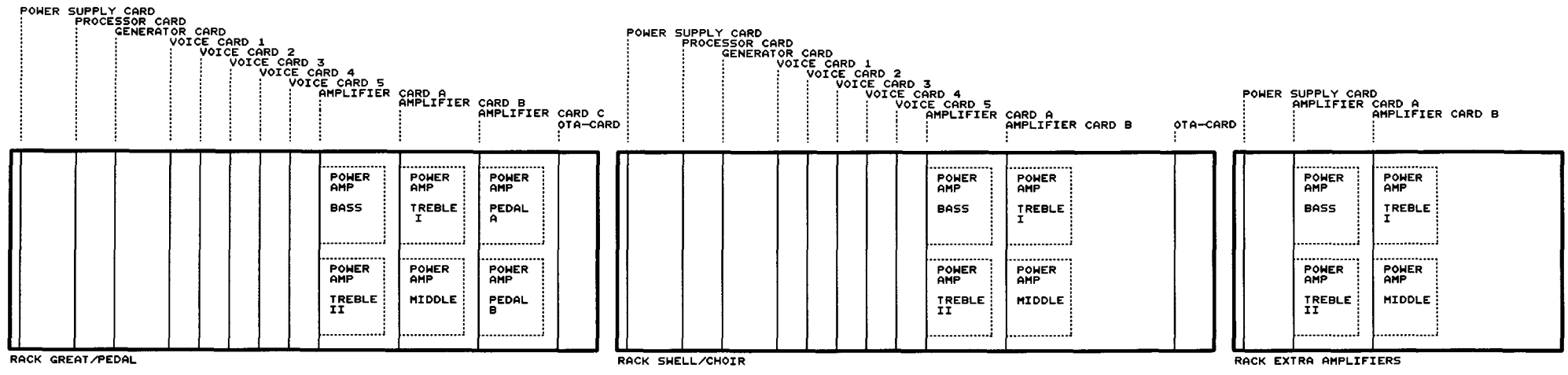
316-48 Hyosung-Dong - PUK-GU, INCHON - KOREA - Tel. (02) 778-1112 - Fax (02) 776-3357

# C O N T E N T S

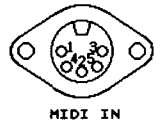
1. BLOCK DIAGRAM ORGAN
2. BLOCK DIAGRAM RACKS
3. POSITION DIAGRAM CARDS (TOPVIEW) & EXTERNAL CONNECTIONS (mounted on the rearside of the organ)
4. PINNING BUS CARD CONNECTORS
5. TRANSFORMER CONNECTIONS & POWER SUPPLY
6. SCANNING KEYING & TRANSPOSER
7. STOP-BANK (speaking stops)
8. STOP-BANK (accessories) & SWITCH BANK CAPTURE SYSTEM
9. INPUT CIRCUIT SCANNING KEYING, TRANSPOSER & GENERAL CRESCENDO CIRCUIT (master processor)
10. INPUT CIRCUIT STOPS & CAPTURE SYSTEM (master processor)
11. C.P.U. (master processor)
12. PROCESSOR CARD (2x)
13. GENERATOR CARD (2x)
14. VOICE CARD (10x)
15. VOLUMECONTROLS & ECHO INTERFACE (ota card pedal/great)
16. VOLUMECONTROLS & ECHO INTERFACE (ota card choir/swell)
17. EXPRESSION PEDAL CIRCUIT (2x) (ota card)
18. AMPLIFIER CARD (5x)
19. EXTRA AMPLIFIER INTERFACE
20. EXTRA AMPLIFIER CARD (2x)
21. POSITION DIAGRAM ADJUSTMENTS  
INTERNAL POTENTIOMETERS



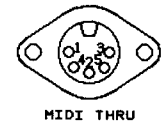




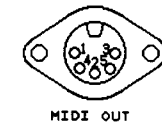
1. NOT CONNECTED
2. NOT CONNECTED
3. NOT CONNECTED
4. +5V MIDI IN
5. MIDI IN



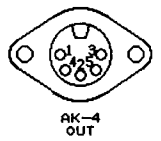
1. NOT CONNECTED
2. NOT CONNECTED
3. NOT CONNECTED
4. +5V MIDI THRU
5. MIDI THRU



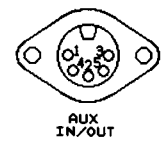
1. NOT CONNECTED
2. NOT CONNECTED
3. NOT CONNECTED
4. +5V MIDI OUT
5. MIDI OUT



1. AK-4 OUT CHANNEL A
2. GROUND
3. NOT CONNECTED
4. AK-4 OUT CHANNEL B
5. NOT CONNECTED

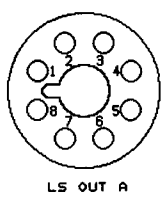


1. AUX OUT CHANNEL A
2. GROUND
3. AUX IN CHANNEL A
4. AUX OUT CHANNEL B
5. AUX IN CHANNEL B

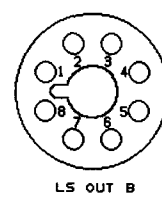


SOLDERSIDE VIEW

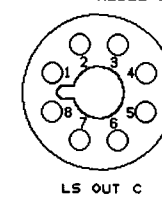
1. - PEDAL A GREAT/PEDAL AMPLIFIER
2. + PEDAL A GREAT/PEDAL AMPLIFIER
3. - PEDAL B GREAT/PEDAL AMPLIFIER
4. + PEDAL B GREAT/PEDAL AMPLIFIER

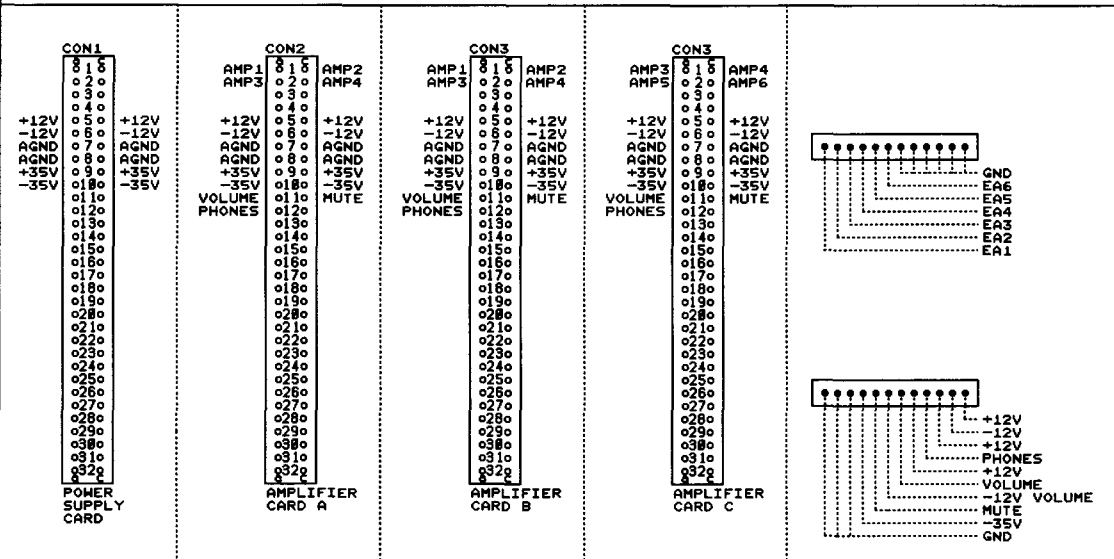
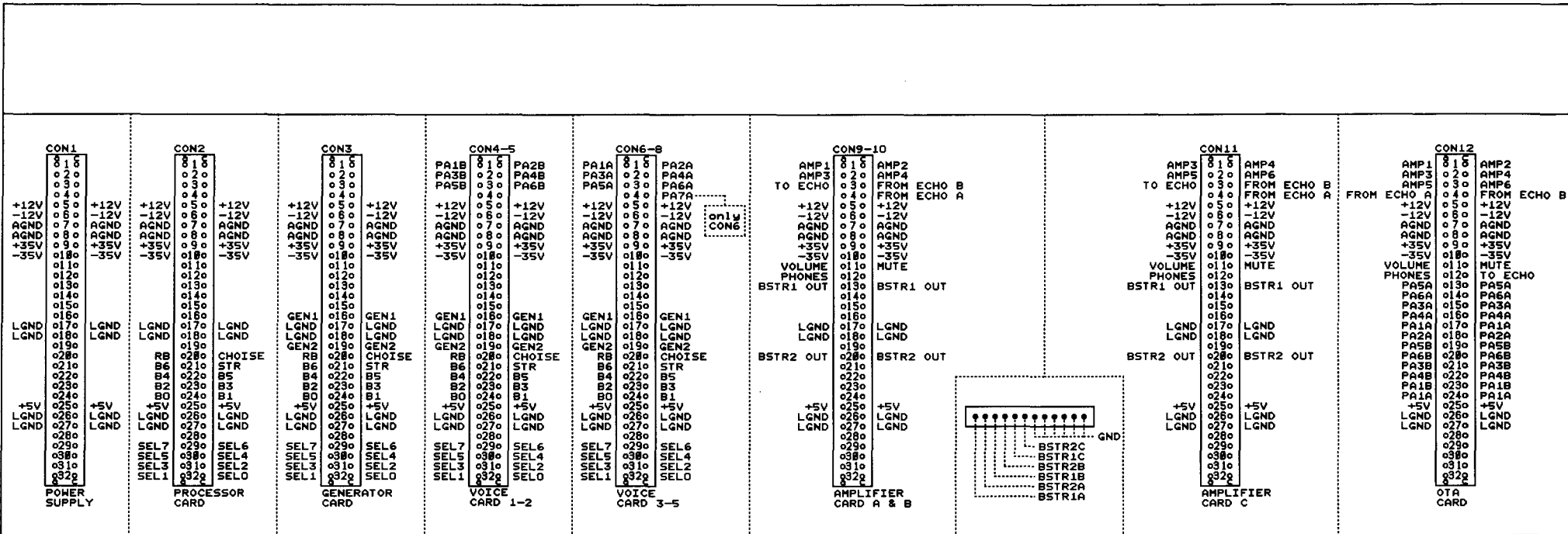


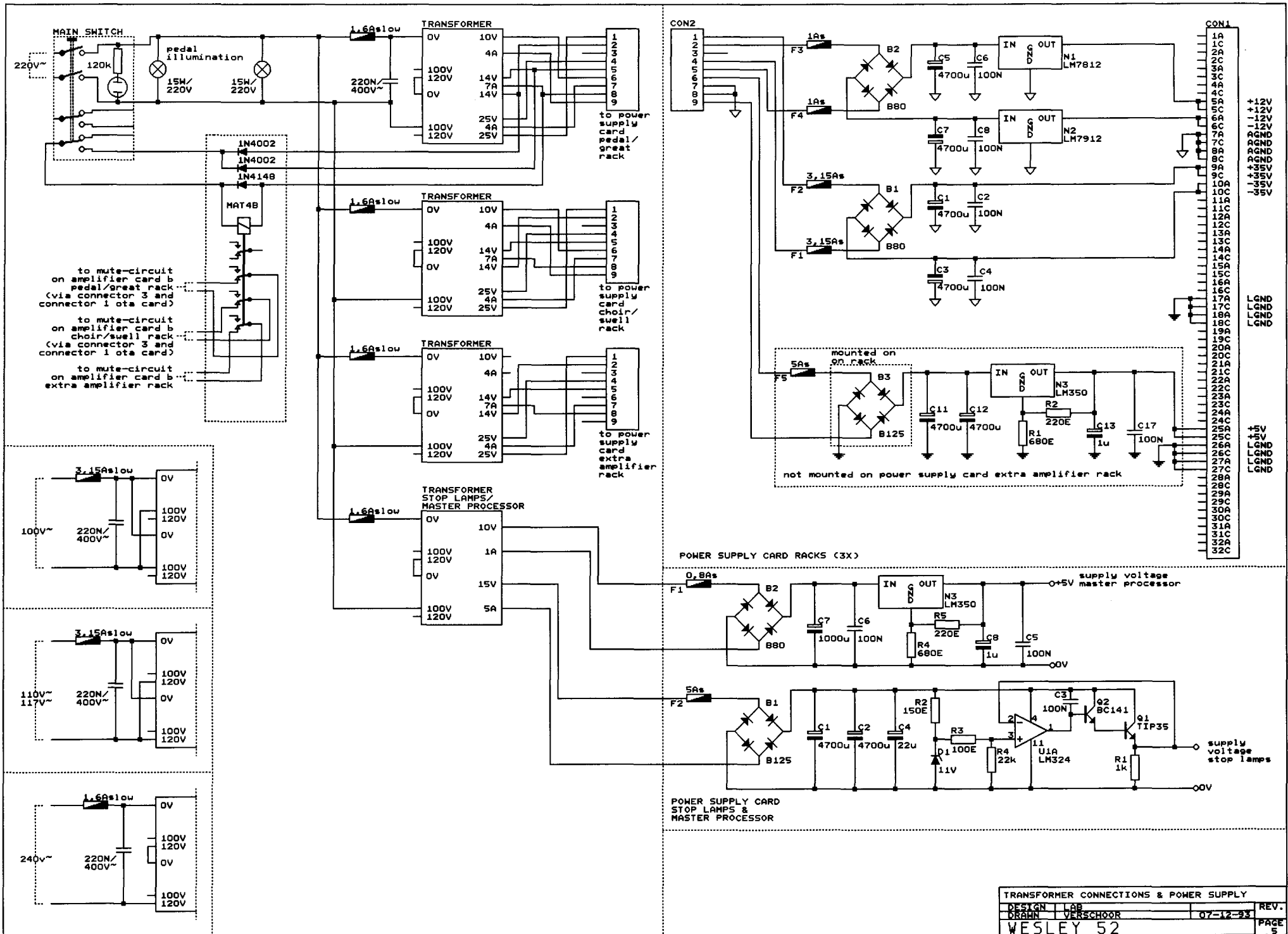
1. - BASS GREAT/PEDAL AMPLIFIER
2. + BASS GREAT/PEDAL AMPLIFIER
3. - MIDDLE GREAT/PEDAL AMPLIFIER
4. + MIDDLE GREAT/PEDAL AMPLIFIER
5. - TREBLE I GREAT/PEDAL AMPLIFIER
6. + TREBLE I GREAT/PEDAL AMPLIFIER
7. - TREBLE II GREAT/PEDAL AMPLIFIER
8. + TREBLE II GREAT/PEDAL AMPLIFIER



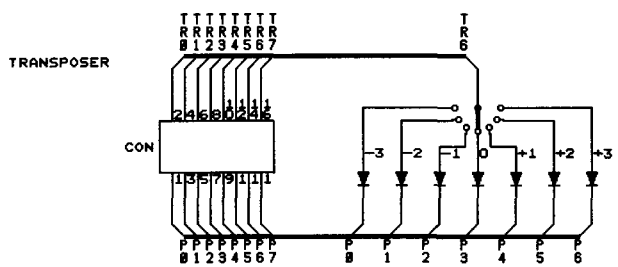
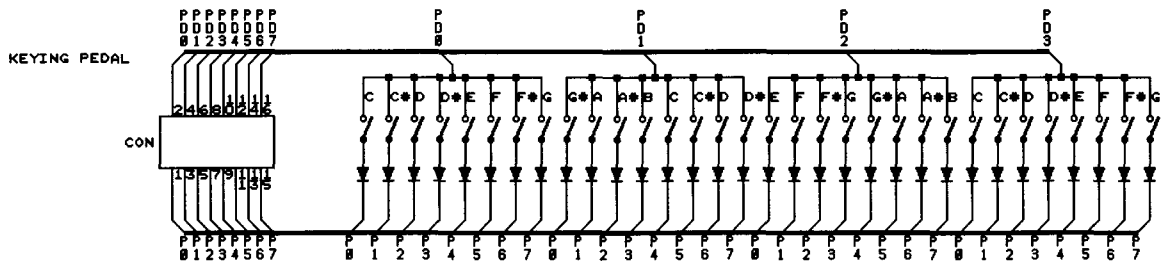
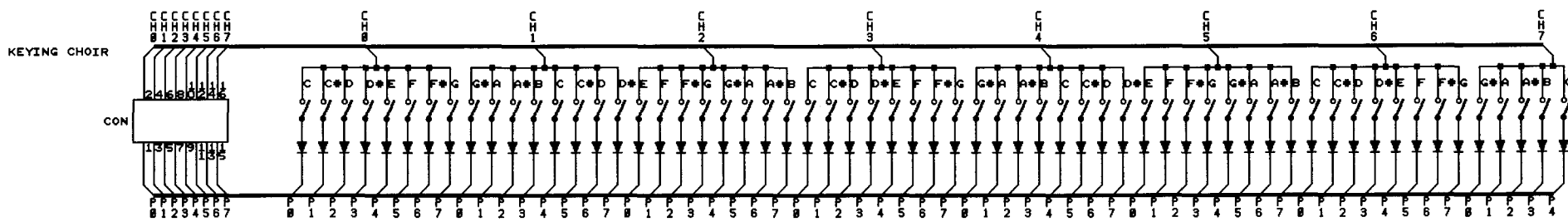
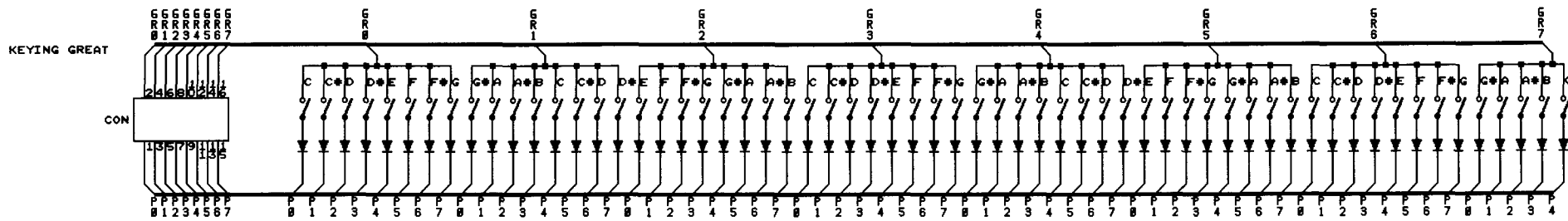
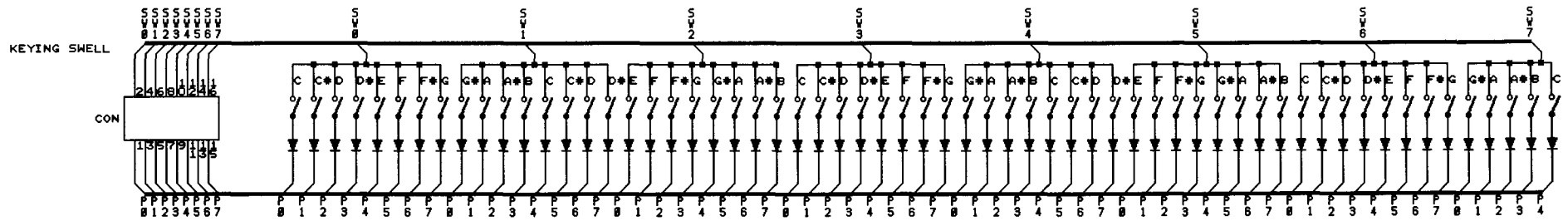
1. - BASS SWELL/CHOIR AMPLIFIER
2. + BASS SWELL/CHOIR AMPLIFIER
3. - MIDDLE SWELL/CHOIR AMPLIFIER
4. + MIDDLE SWELL/CHOIR AMPLIFIER
5. - TREBLE I SWELL/CHOIR AMPLIFIER
6. + TREBLE I SWELL/CHOIR AMPLIFIER
7. - TREBLE II SWELL/CHOIR AMPLIFIER
8. + TREBLE II SWELL/CHOIR AMPLIFIER







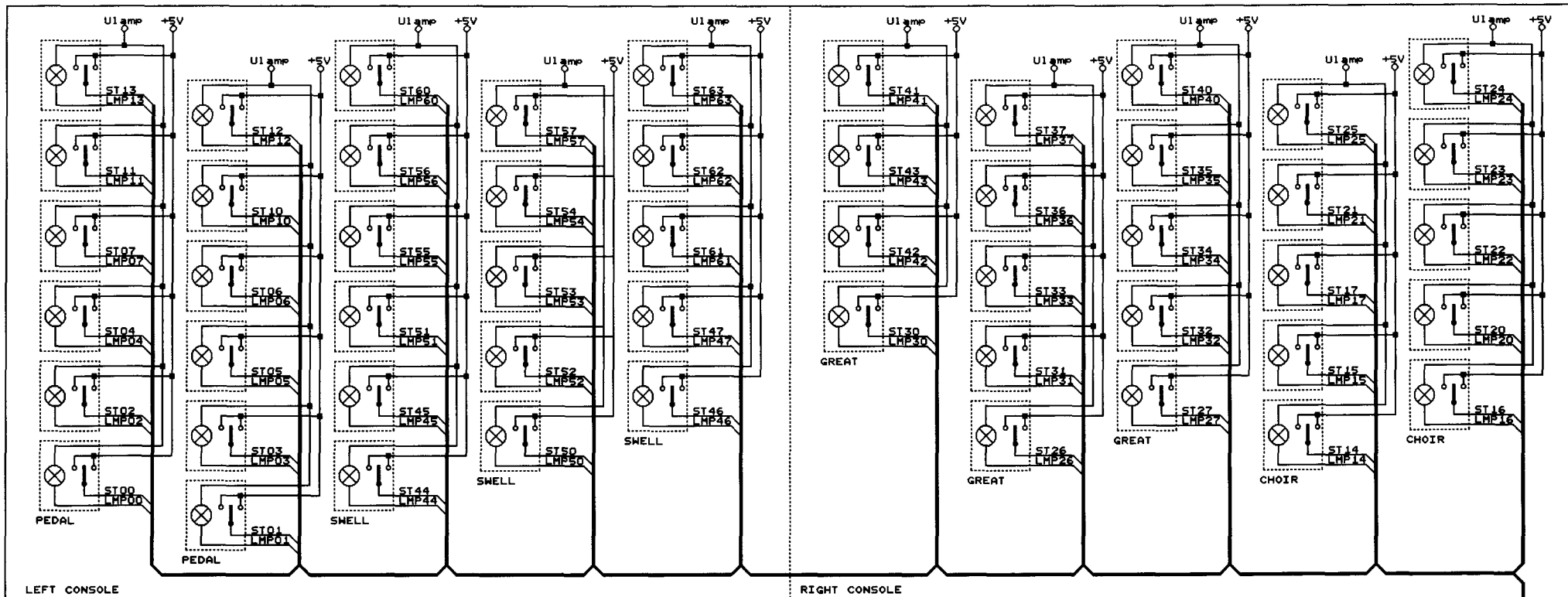
TRANSFORMER CONNECTIONS & POWER SUPPLY			
DESIGN	LAB		REV.
DRAWN	VERSCHOOR	07-12-93	PAGE
WESLEY 52			5



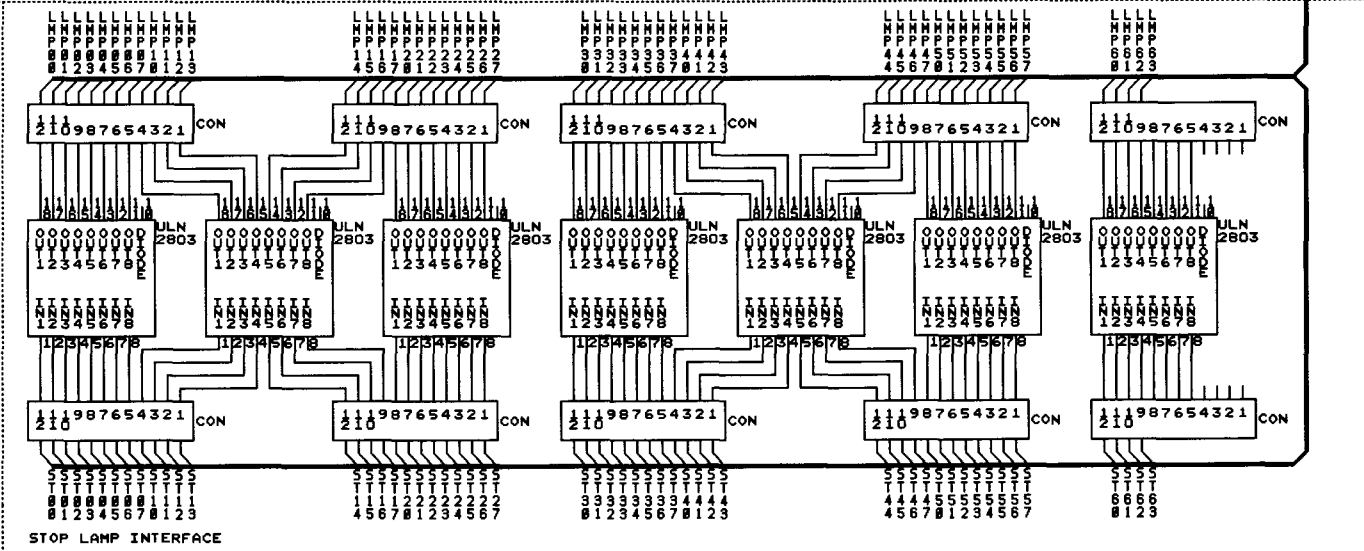
ALL CONNECTORS: TO MASTER PROCESSOR  
ALL DIODES: 1N4148

SCANNING KEYING & TRANSPOSER			
DESIGN	LAB	REV.	
DRAHN	VERSCHOOR	07-12-93	PAGE 6
WESLEY 52			





- STOPLIST**
- PEDAL**
- ST00 = DOUBLE BASS 16'
  - ST01 = SUBBASS 16'
  - ST02 = OCTAVE 8'
  - ST03 = GEDACHT 8'
  - ST04 = CHORALBASS 4'
  - ST05 = BASSFLUTE 4'
  - ST06 = OPEN FLUTE 2'
  - ST07 = MIXTURE III
  - ST10 = BOMBARDE 32'
  - ST11 = CONTRA TRUMPET 16'
  - ST12 = TRUMPET 8'
  - ST13 = CLARION 4'
- GREAT**
- ST26 = BOURDON 16'
  - ST27 = OPEN DIAPASON 8'
  - ST30 = GAMBA 8'
  - ST31 = ROHRFLUTE 8'
  - ST32 = OCTAVE 4'
  - ST33 = OPEN FLUTE 4'
  - ST34 = TWELFTH 2 2/3'
  - ST35 = SUPEROCTAVE 2'
  - ST36 = CONICAL FLUTE 2'
  - ST37 = CORNET IV
  - ST40 = MIXTURE V-VII
  - ST41 = SCHARF III-V
  - ST42 = CONTRA TRUMPET 16'
  - ST43 = TRUMPET 8'
- CHOIR**
- ST14 = LIEBL. GEDECKT 16'
  - ST15 = BOURDON 8'
  - ST16 = OCTAVE 4'
  - ST17 = OPEN FLUTE 4'
  - ST20 = NAZARD 2 2/3'
  - ST21 = CONICAL FLUTE 2'
  - ST22 = TIERCE 1 3/5'
  - ST23 = SIFFLUTE 1'
  - ST24 = CYMBAL II-III
  - ST25 = CLARINET 8'
- SWELL**
- ST44 = QUINTATON 16'
  - ST45 = OPEN DIAPASON 8'
  - ST46 = VIOLA 8'
  - ST47 = CELESTE 8'
  - ST50 = STOPPED FLUTE 8'
  - ST51 = OCTAVE 4'
  - ST52 = ROHRFLUTE 4'
  - ST53 = FLUTE TWELFTH 2 2/3'
  - ST54 = HALDFLUTE 2'
  - ST55 = NAZARD 1 1/3'
  - ST56 = OCTAVE 1'
  - ST57 = SESQUIALTER II
  - ST60 = RAUSCHPFEIFE III-V
  - ST61 = FAGOTTO 16'
  - ST62 = CROMORNE 8'
  - ST63 = VOX HUMANA 8'



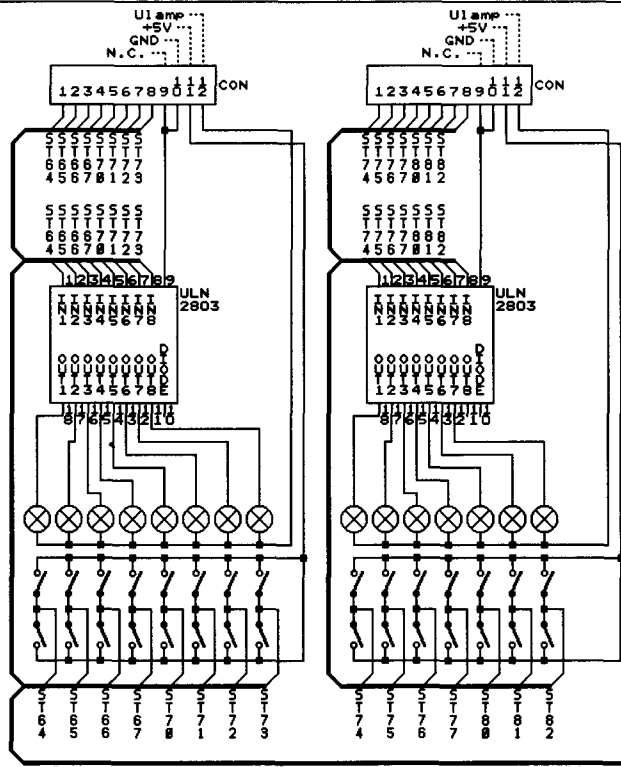
ALL CONNECTORS: ALSO TO MASTER PROCESSOR  
 ALL STOPLAMPS: 14Vdc/75mA

STOP-BANK (speaking stops)			
DESIGN	LAB		REV.
DRAHN	VERSCHOOR	07-12-93	
WESLEY 52			PAGE 7

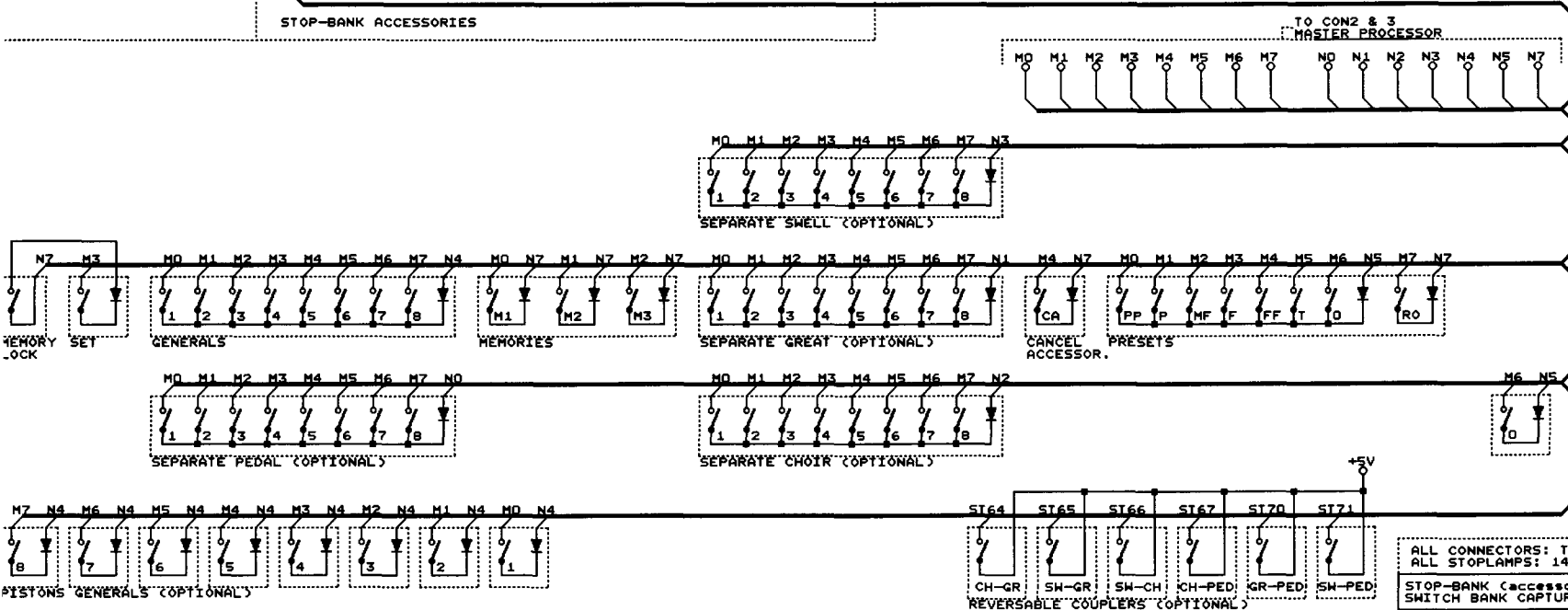
LIST

# ACCESSORIES

- == CHOIR TO GREAT
- == SWELL TO GREAT
- == SWELL TO CHOIR
- == CHOIR TO PEDAL
- == GREAT TO PEDAL
- == SWELL TO PEDAL
- == TREMULANT CHOIR
- == TREMULANT GREAT
- == TREMULANT SWELL
- == CHORUS
- == MANUAL BASS
- == MIDI TO CHOIR (CHAN. 1)
- == MIDI TO GREAT (CHAN. 2)
- == MIDI TO SWELL (CHAN. 3)
- == MIDI TO PEDAL (CHAN. 4)



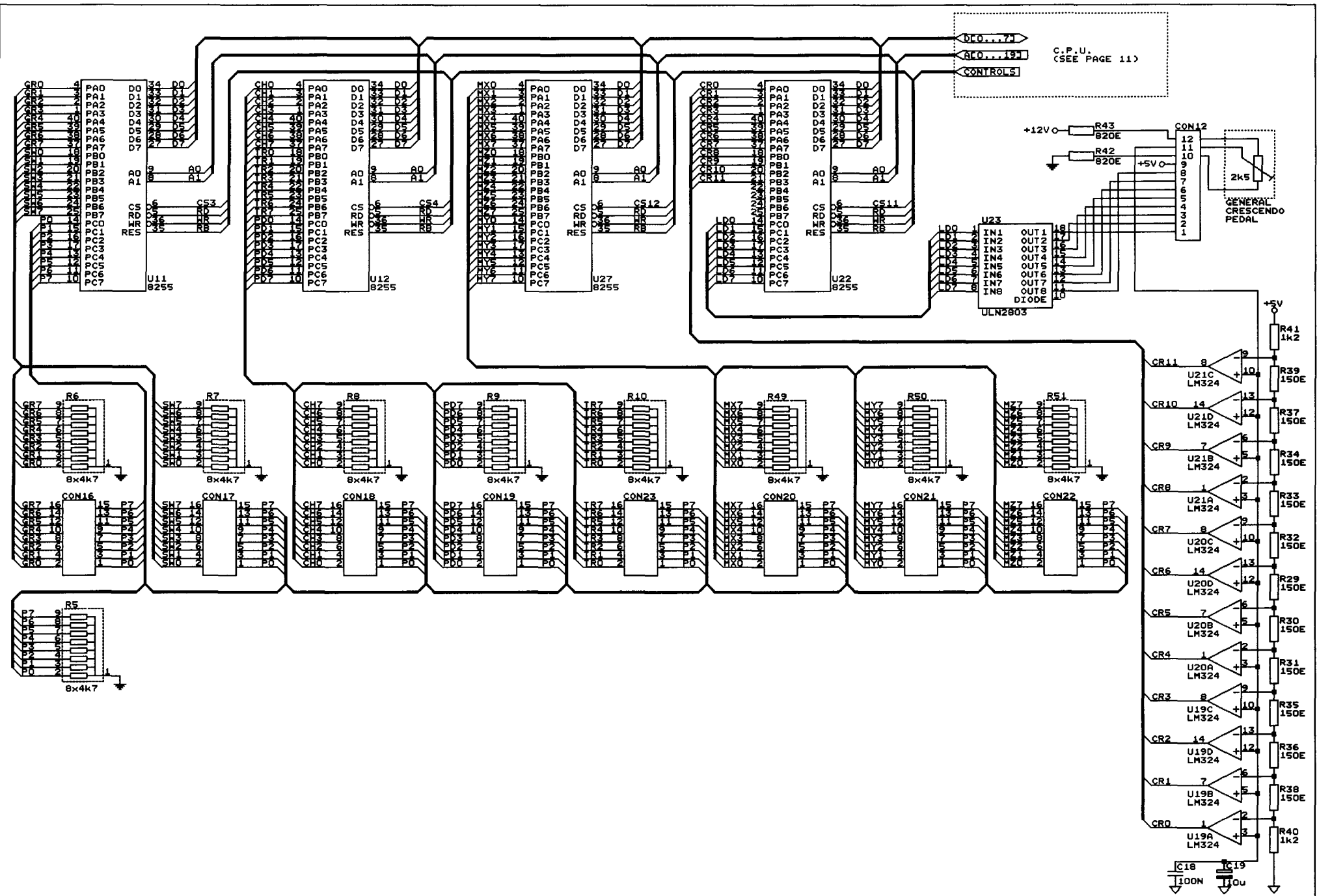
STOP-BANK ACCESSORIES



CH-BANK CAPTURE SYSTEM

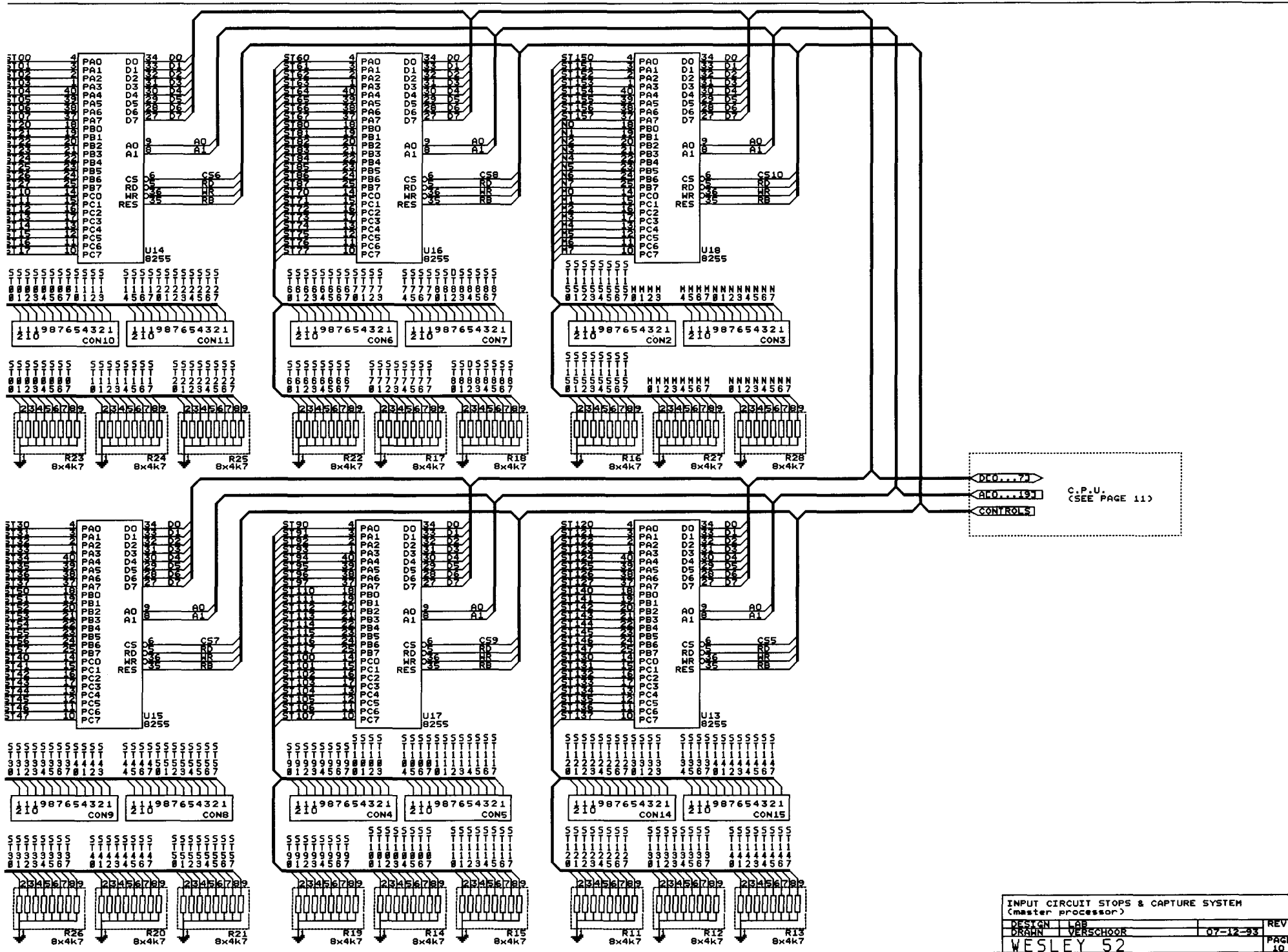
ALL CONNECTORS: TO MASTER PROCESSOR  
ALL STOPLAMPS: 14Vdc/75mA

STOP-BANK (accessories) & SWITCH BANK CAPTURE SYSTEM	
DESIGN	LAB
DRAWN	VERECHOOR
07-12-93	
REV.	PAGE
WESLEY 52	8



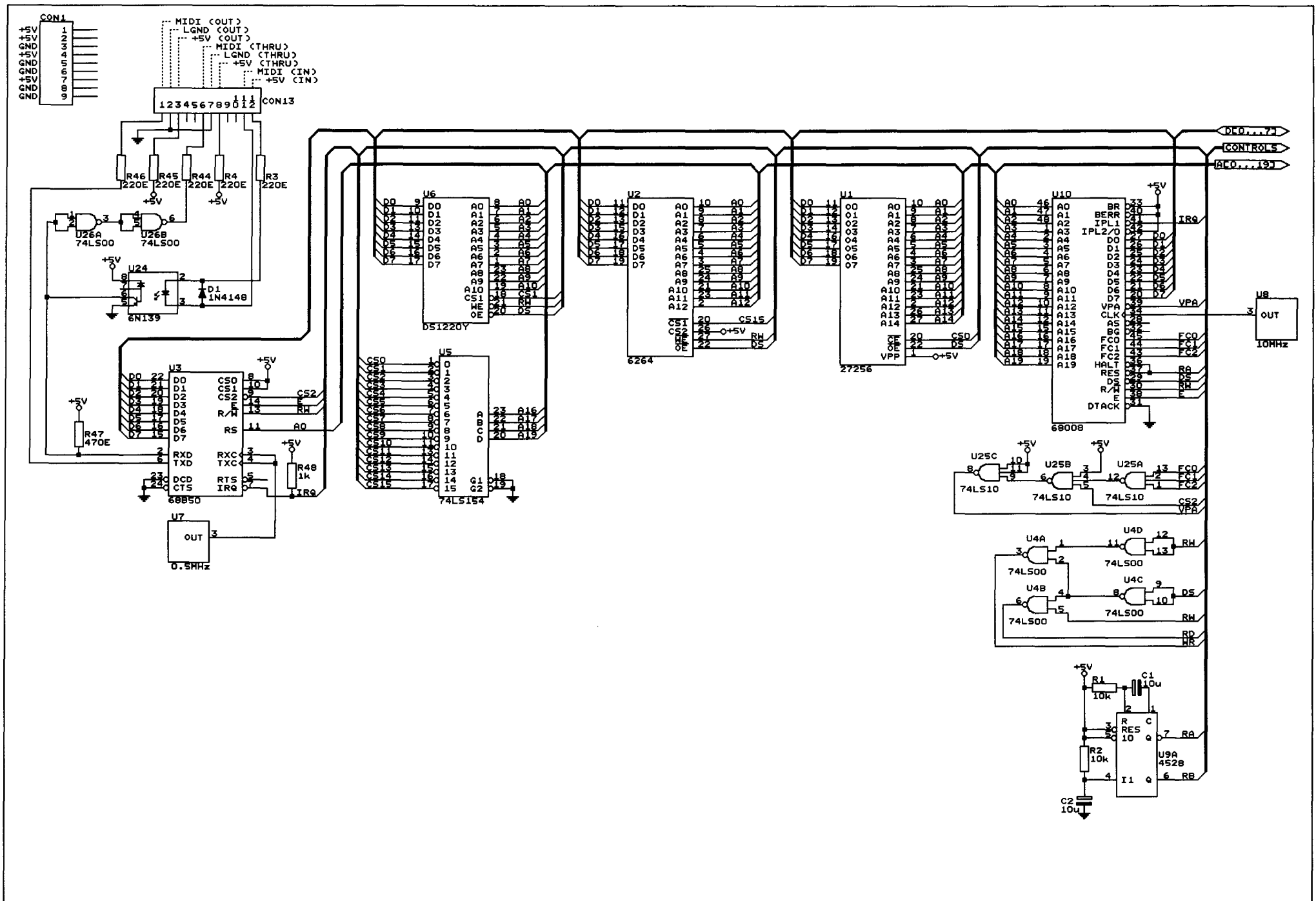
INPUT CIRCUIT SCANNING KEYING, TRANSPOSER & GENERAL CRESCENDO CIRCUIT (master processor)

DESIGN	LAB	REV.
DRAWN	VERSCHOOR	07-12-93
WESLEY 52		PAGE 9

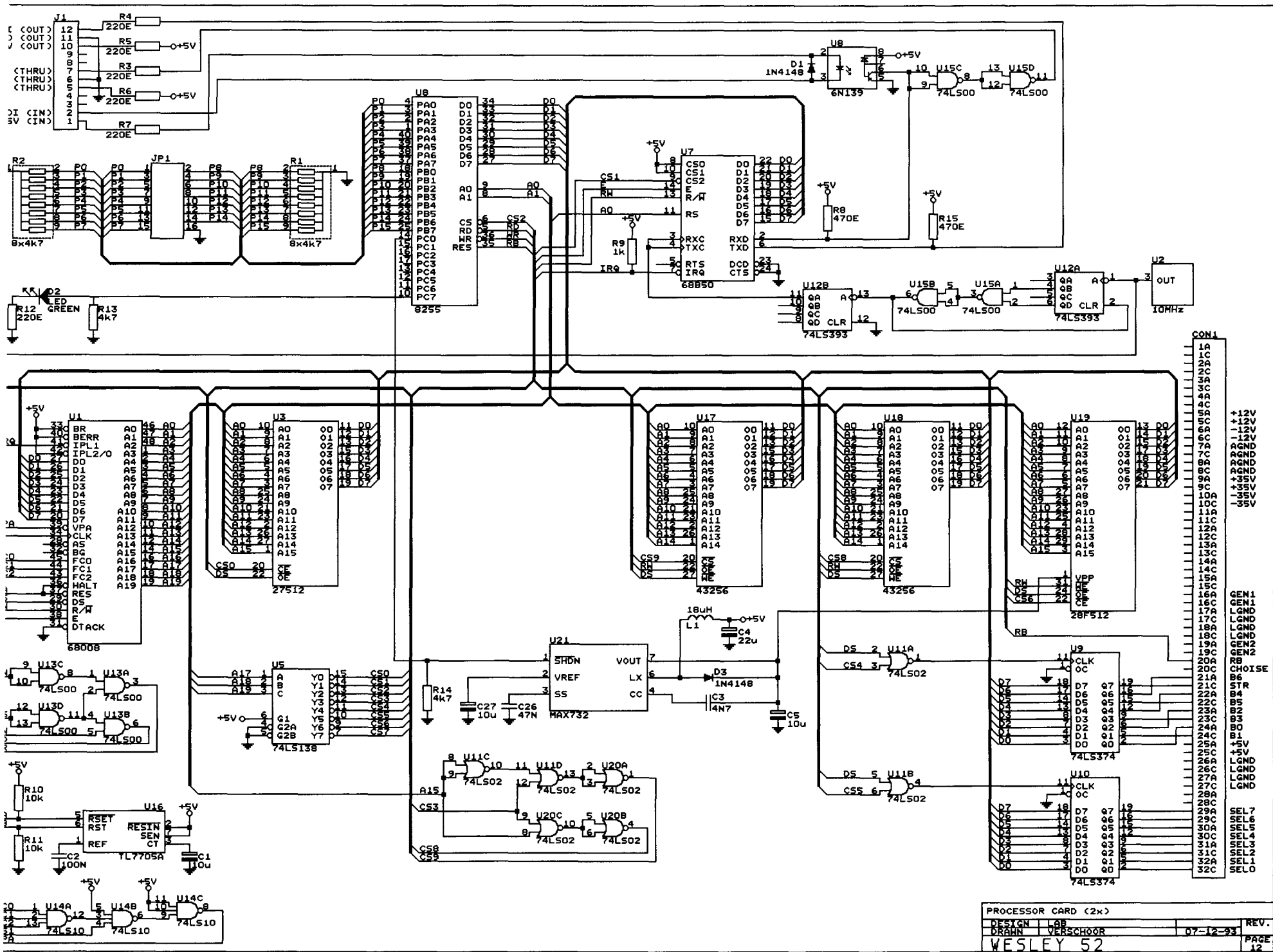


DO...24  
 AO...19  
 CONTROLS

C.P.U.  
 (SEE PAGE 11)

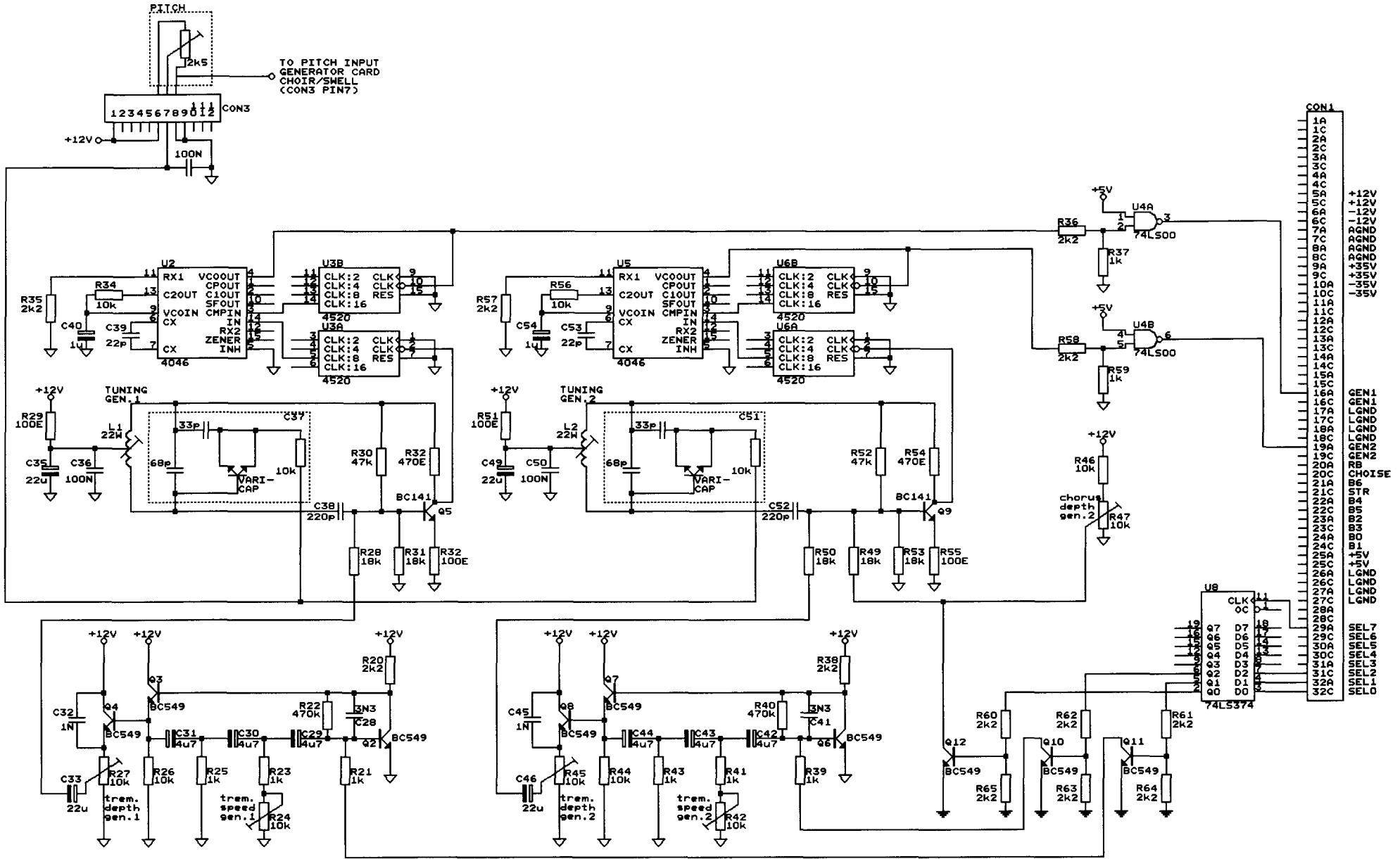


C.P.U. (master processor)			
DESIGN	LAB		REV.
DRAHN	VERSCHOOR	07-12-93	PAGE 11
WESLEY 52			

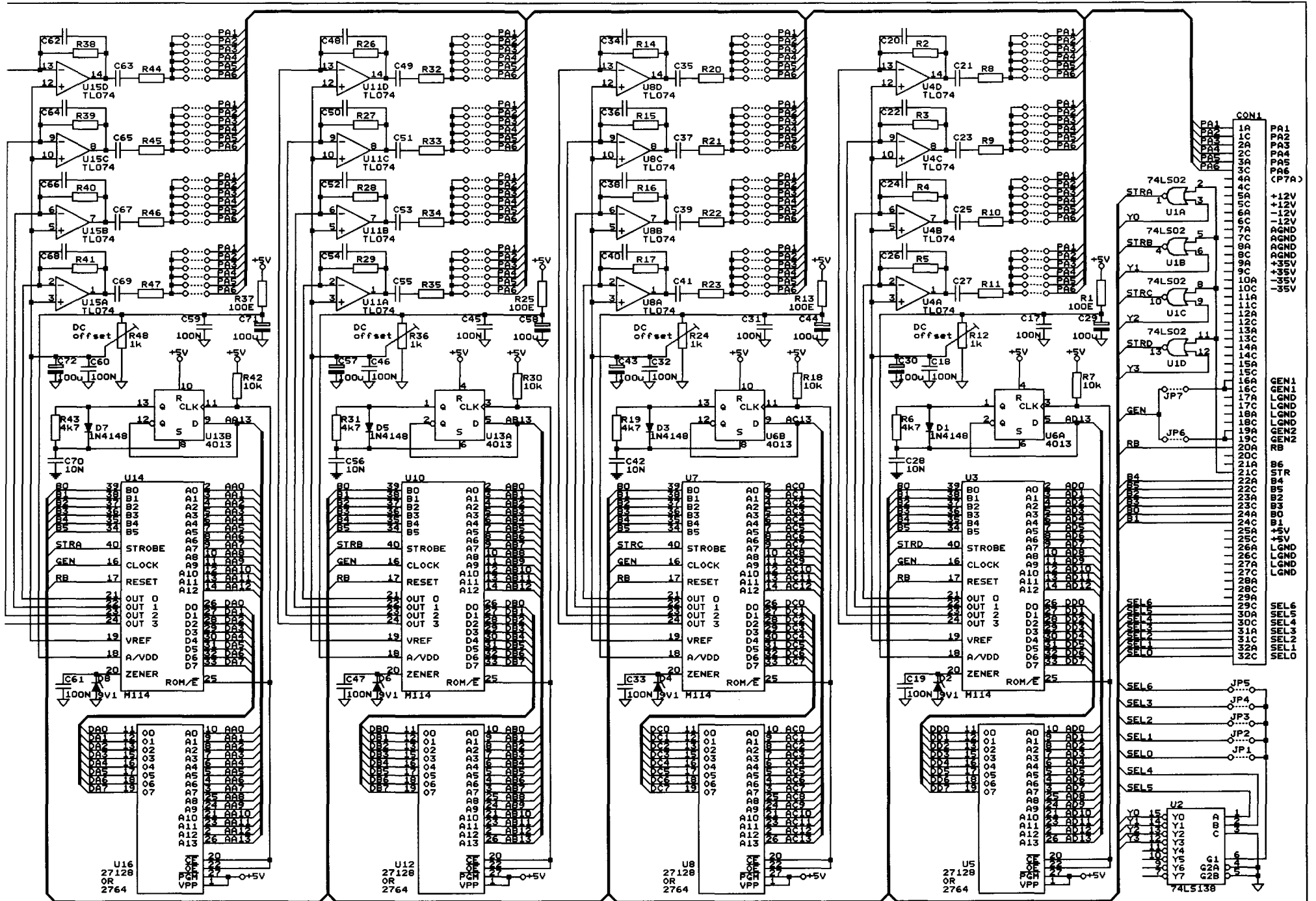


PROCESSOR CARD (2x)			
DESIGN	LAB		REV.
DRAWN	VERSCHOOR	07-12-93	PAGE
WESLEY 52			12

GENERATOR CARD PEDAL/GREAT	GENERATOR CARD CHOIR/SWELL
GEN.1 = GREAT	GEN.1 = CHOIR
GEN.2 = PEDAL	GEN.2 = SWELL



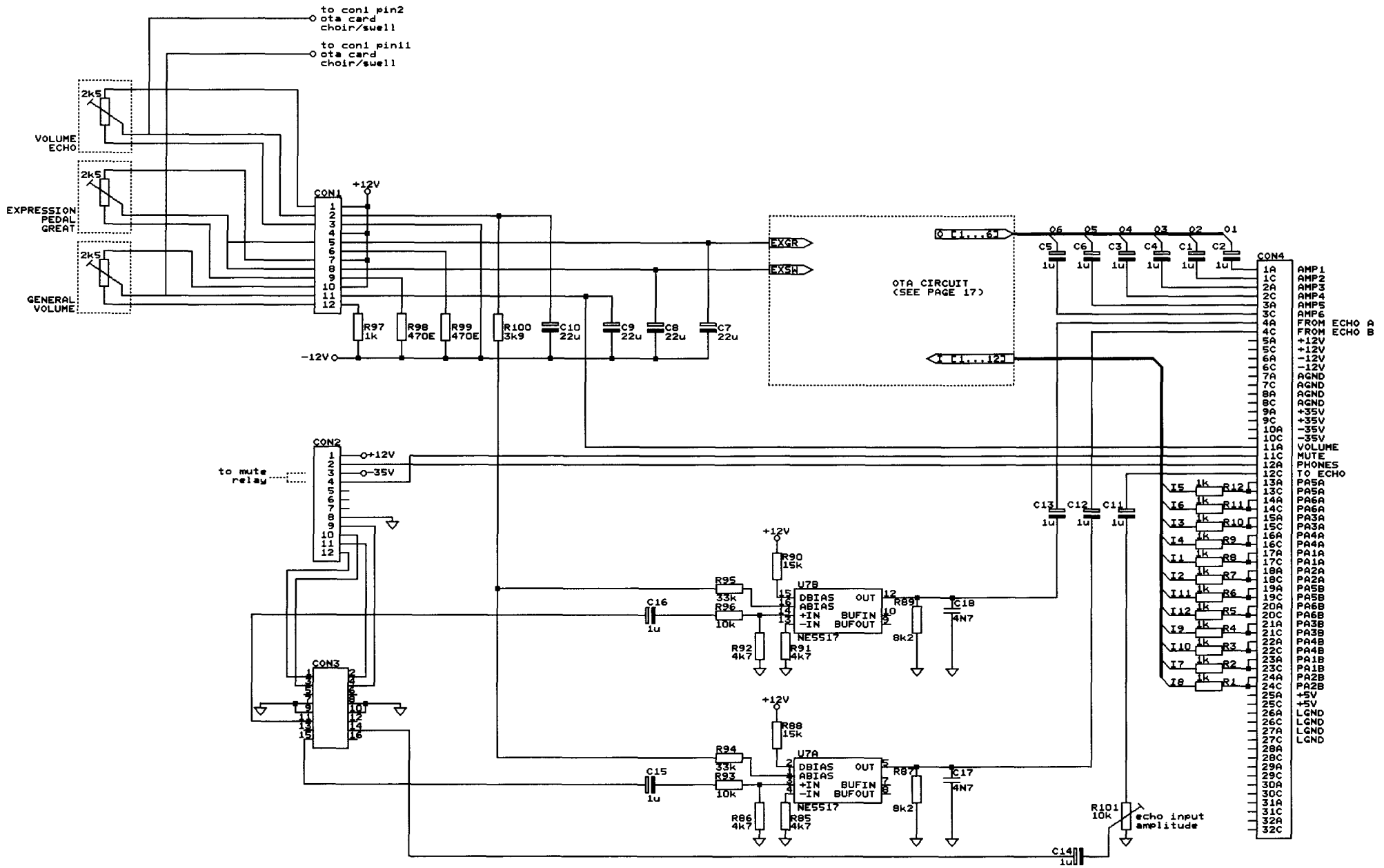
GENERATOR CARD (2x)			
DESIGN	LAB		REV.
DRAHN	VERSCHOOR	07-12-93	PAGE
WESLEY 52			13

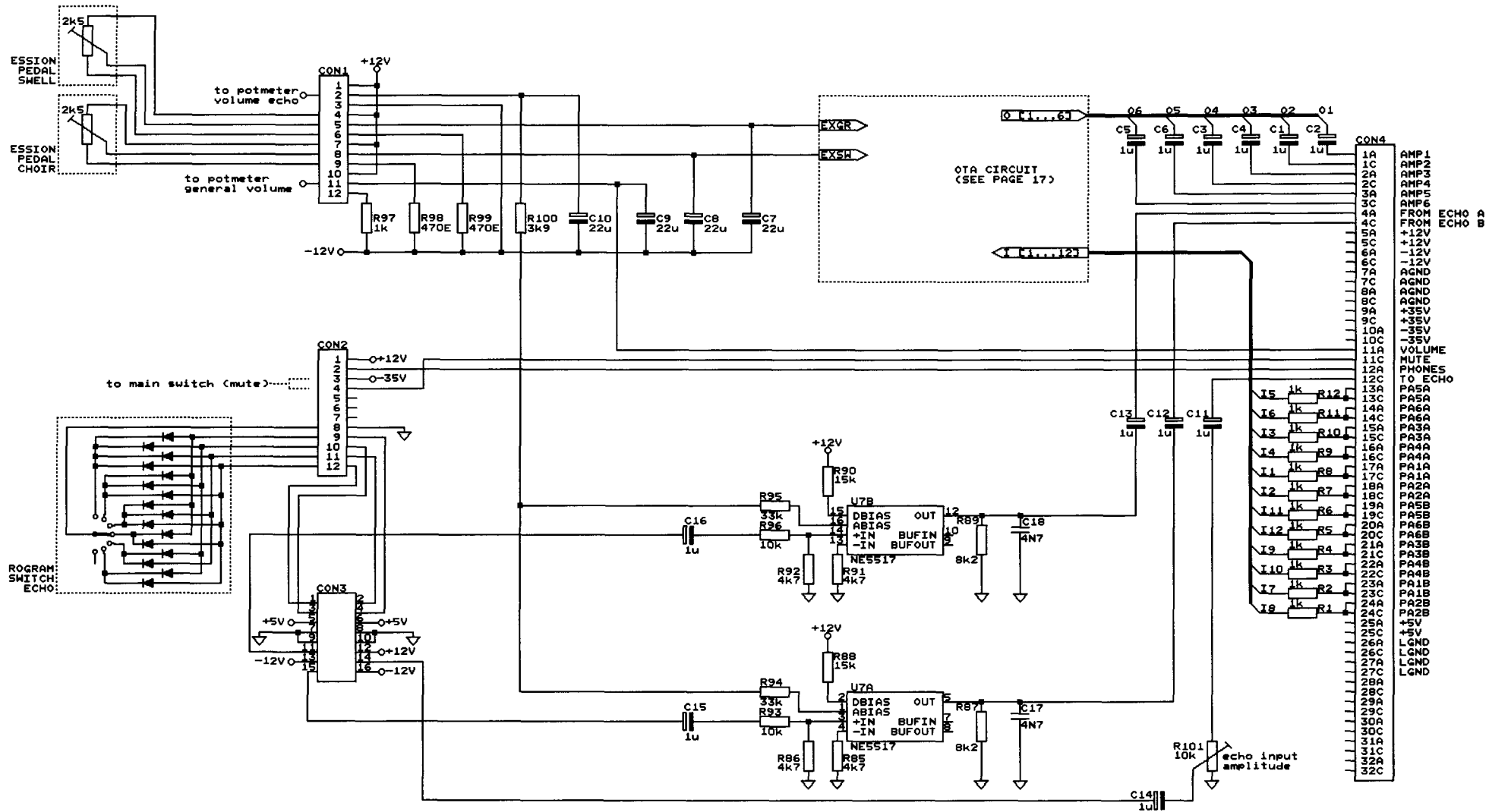


NOTE: IF FOR U5, U8, U12 OR U16 A 2764 EPROM IS PLACED INSTEAD OF A 27128 EPROM, THE 1/2 4013 (U6 AND U13) USED FOR SWITCHING THE UPPER BK ROM AND THE LOWER BK ROM, IS NOT NECESSARY.

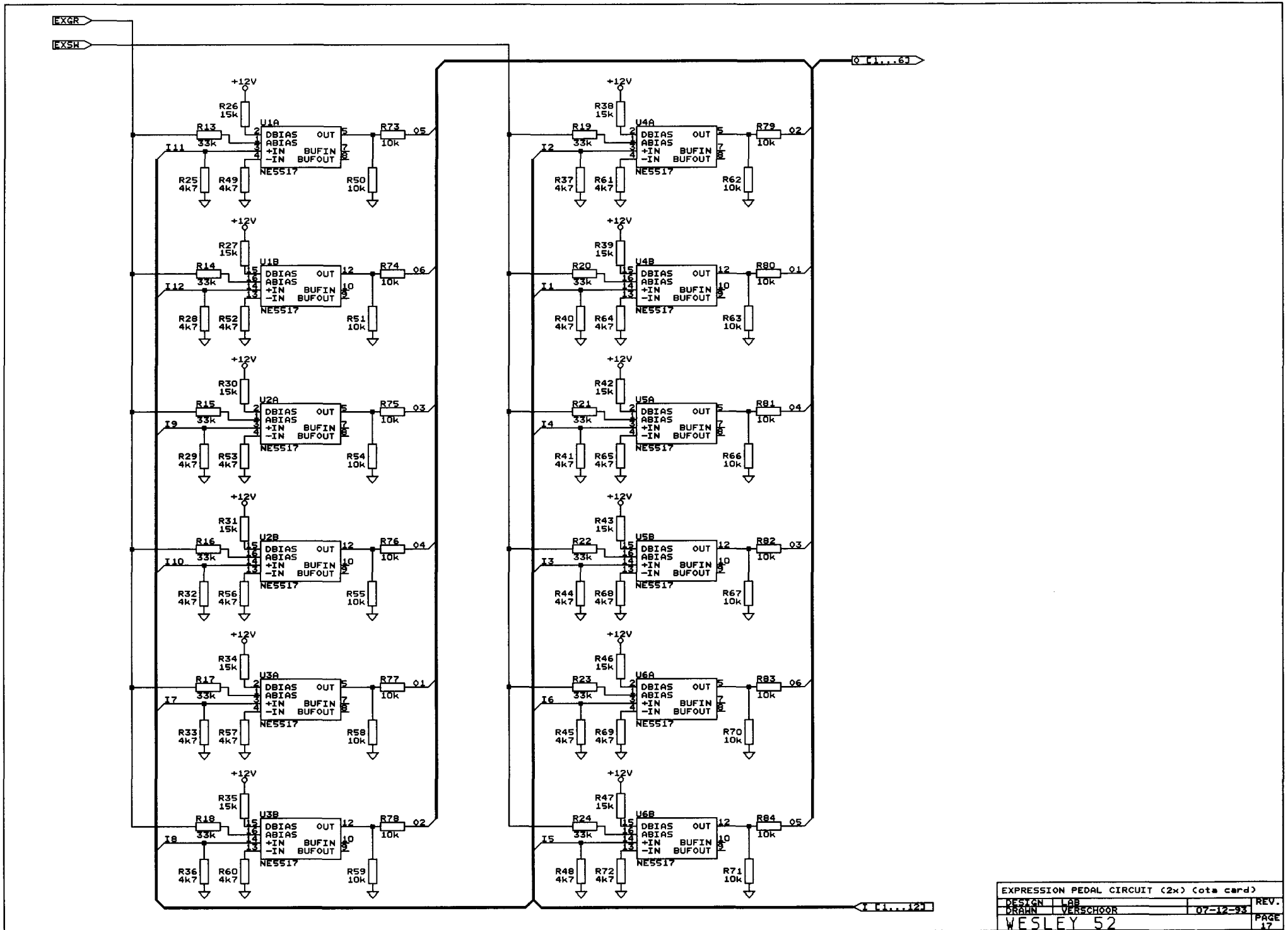
VOICE CARD (10x)			REV.
DESIGN	LAB		
DRAWN	VERSCHOOR	07-12-93	
WESLEY 52			PAGE 14

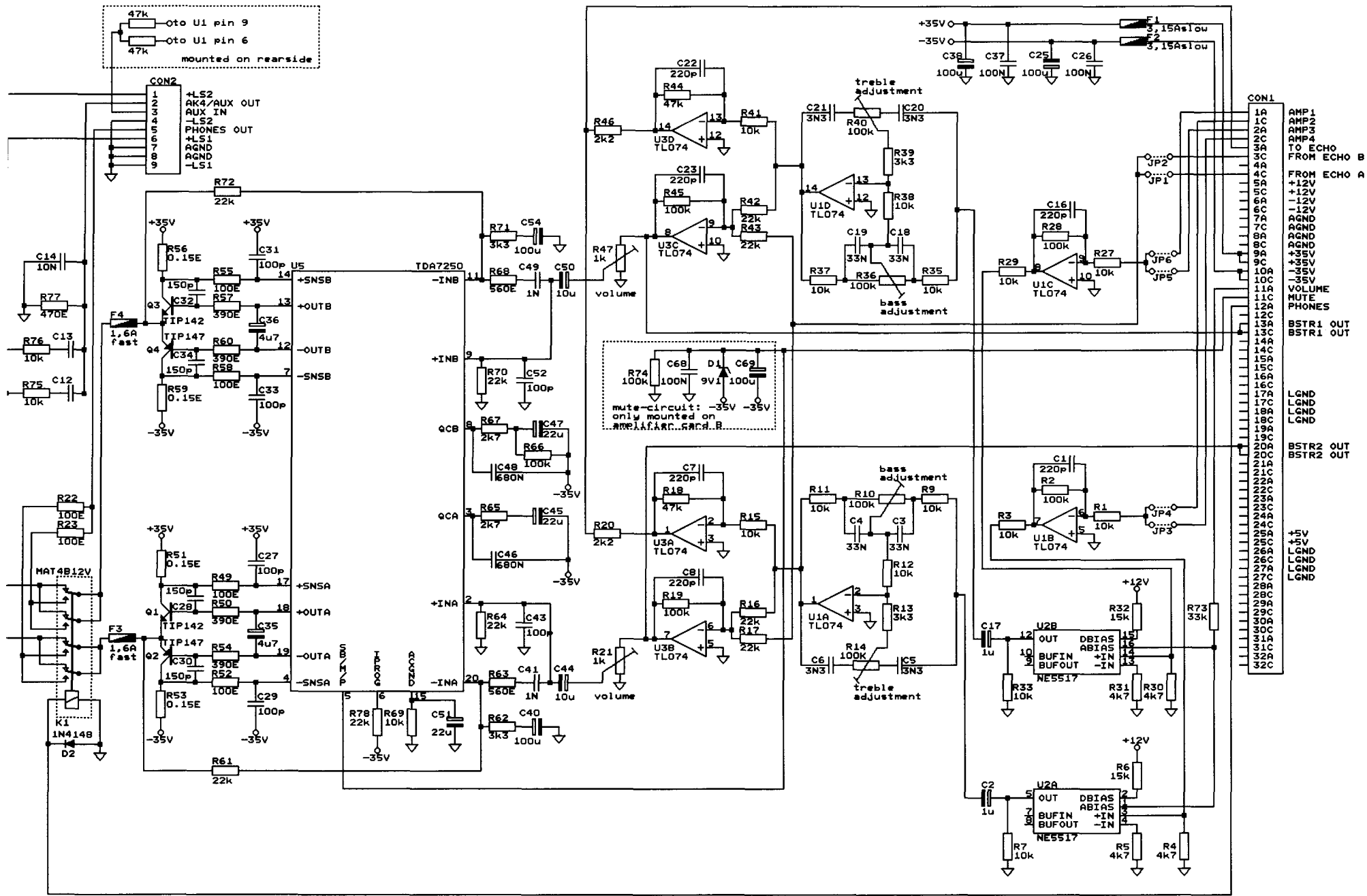


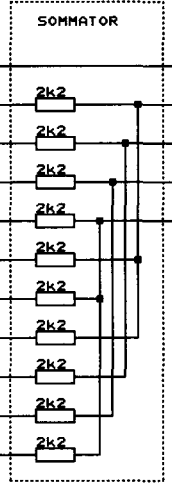
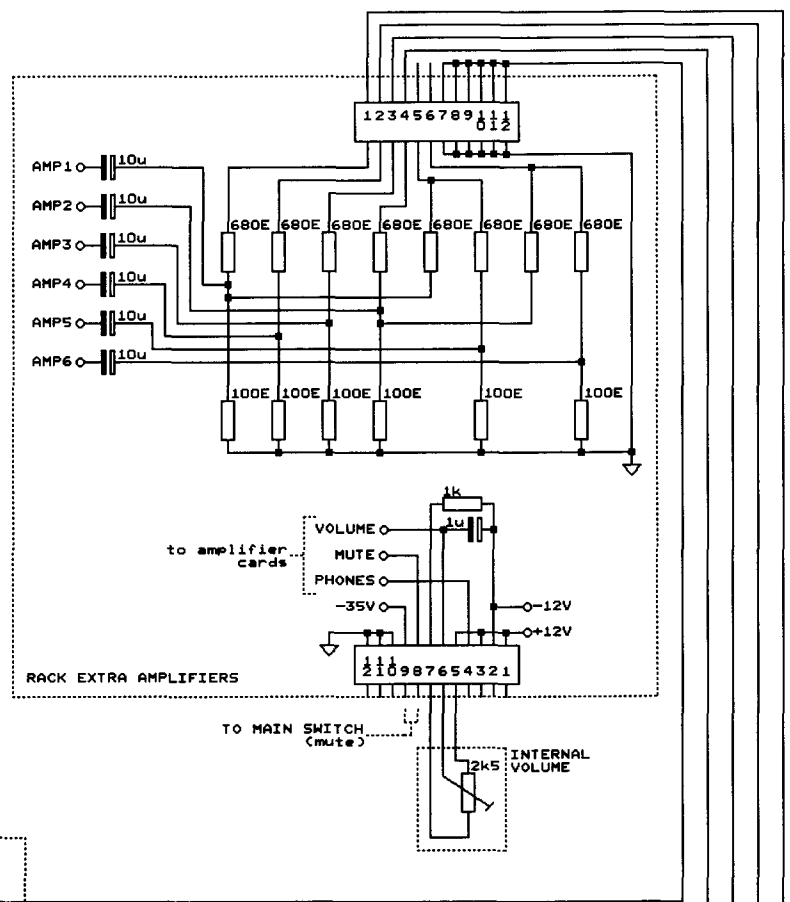
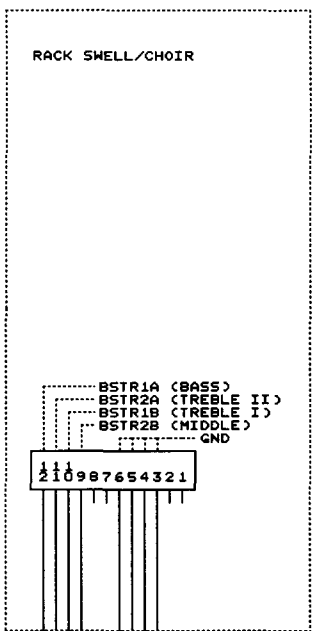
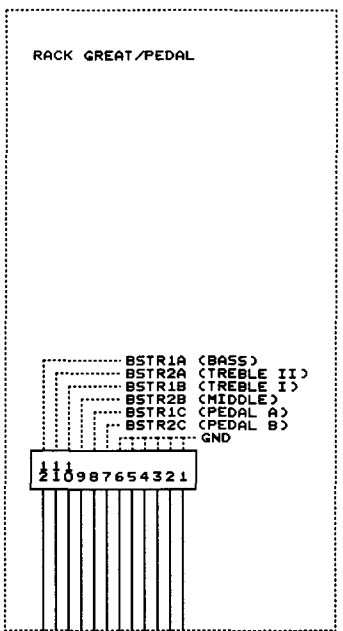


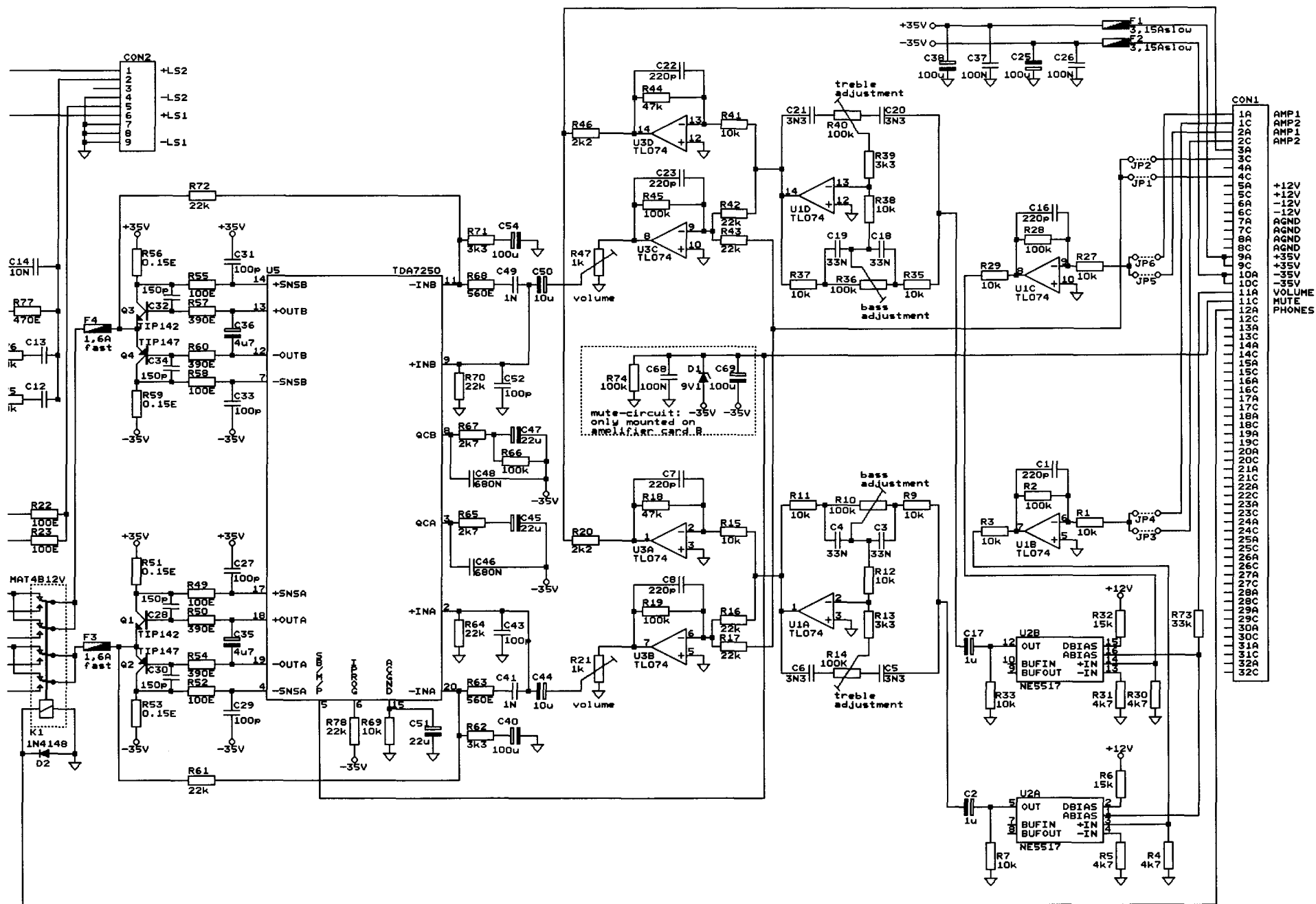


VOLUME CONTROLS & ECHO INTERFACE (ota card choir/swell)			
DESIGN	LAB		REV.
DRAWN	VERSCHOOR	07-12-93	PAGE
WESLEY 52			16



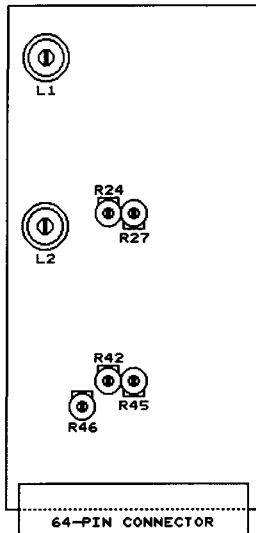






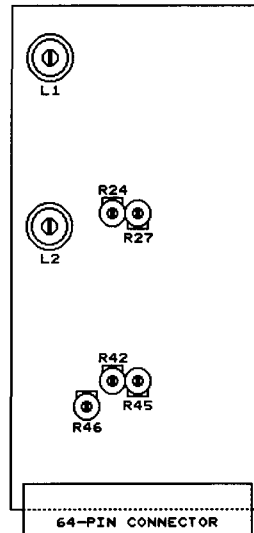
EXTRA AMPLIFIER CARD (2x)			
DESIGN	LAB		REV.
DRAHN	VERSCHOOR	07-12-93	PAGE 20
WESLEY 52			

GENERATOR CARD PEDAL/GREAT  
(COMPONENT-SIDE VIEW)



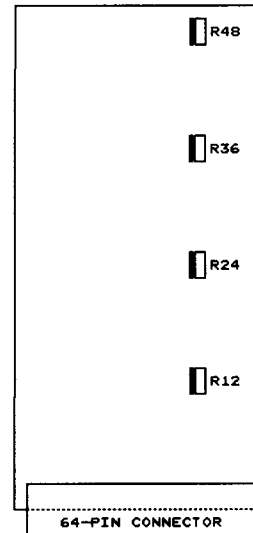
L1 = TUNING GREAT  
L2 = TUNING PEDAL  
R24 = TREMLANT SPEED GREAT  
R27 = TREMLANT DEPTH GREAT  
R42 = NOT USED  
R45 = NOT USED  
R46 = INTENSITY CHORUS PEDAL

GENERATOR CARD CHOIR/SWELL  
(COMPONENT-SIDE VIEW)



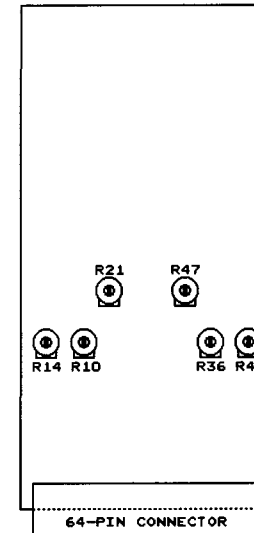
L1 = TUNING CHOIR  
L2 = TUNING SWELL  
R24 = TREMLANT SPEED CHOIR  
R27 = TREMLANT DEPTH CHOIR  
R42 = TREMLANT SPEED SWELL  
R45 = TREMLANT DEPTH SWELL  
R46 = INTENSITY CHORUS SWELL

VOICE CARD  
(COMPONENT-SIDE VIEW)



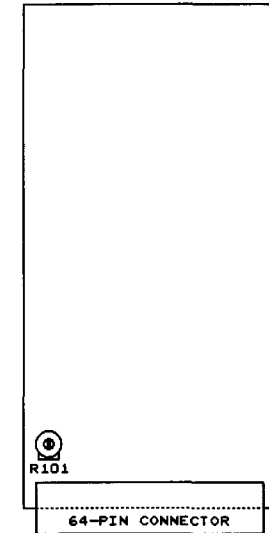
R12 = DC-OFFSET VOICE D  
(DISTORSION VOICE D)  
R24 = DC-OFFSET VOICE C  
(DISTORSION VOICE C)  
R36 = DC-OFFSET VOICE B  
(DISTORSION VOICE B)  
R48 = DC-OFFSET VOICE A  
(DISTORSION VOICE A)  
NOTE: R12-R24-R36-R48 ARE NOT  
FOR CHANGING VOLUMES!!  
TURNING THESE POTENTIOMETERS  
WILL GIVE DISTORSION!!

AMPLIFIER CARD  
(COMPONENT-SIDE VIEW)



R10 = BASS LEFT AMPLIFIER  
R14 = TREBLE LEFT AMPLIFIER  
R21 = VOLUME LEFT AMPLIFIER  
R36 = BASS RIGHT AMPLIFIER  
R40 = TREBLE RIGHT AMPLIFIER  
R47 = VOLUME RIGHT AMPLIFIER

OTA CARD  
(COMPONENT-SIDE VIEW)



R101 = INPUT AMPLITUDE ECHO

